

Enterprise Suite

Configurable graphical application with full control, scheduling and system insight

Key Features

- Choose from Enterprise Operate, Enterprise Floorplan or Enterprise Complete Suite
- Fully customisable page layouts and images with intuitive navigation
- Simplify complex actions with one touch control
- Adjustable time control
- Multi-user option with security access settings
- Floorplan control with feedback
- Energy dials and advanced graphs for further system insight (Complete Suite only)
- Supports any size PC monitor
- Connects to iLight lighting network via EG2 Ethernet Gateway with optional remote access
- Enterprise Operate and Enterprise Floorplan designed for Windows 10 and above with minimum hardware specification PC required
- Enterprise Suite Complete supplied with server and Windows server OS
- Software only or fully installed hardware packages available



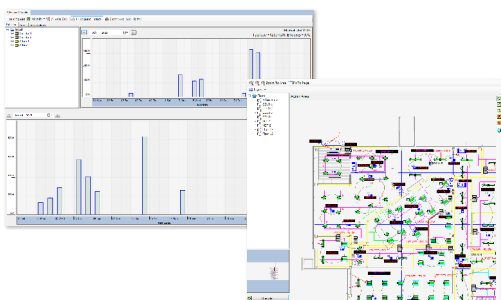
Overview

Enterprise Suite is a set of software packages for the control and operation of iLight and iLumin lighting control systems. There are three packages available with different levels of control capability to cater for even the most complex lighting control systems.

Enterprise Operate is designed to give powerful user control through a simple intuitive customised graphical interface. Actions may be manually controlled or scheduled for specific day/dates and times using the powerful astronomical timeclock scheduler.

Enterprise Floorplan adds the ability to import building and campus wide floor plans for additional control and feedback on system health.

Enterprise Suite Complete with Server includes energy usage displays and advanced graphs for greater insight into system energy consumption and space usage of the facility.

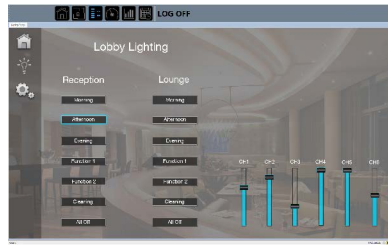


Enterprise Operate

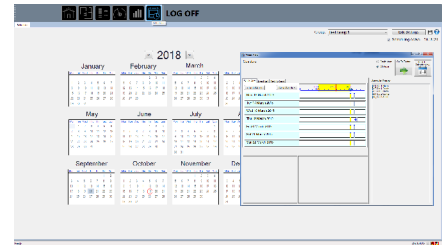
The first level package is Enterprise Operate which consists of a fully configurable and customisable graphical user interface to simplify the operation of lighting in any installation. Screen pages can be custom designed to give powerful operator control of the lighting scenes in multiple areas and with the in built event scheduler, programming timeclock events provides a sophisticated level of automation.



PC Operate showing multiple scene selection and channel level control.



Event Scheduler (Included in all packages) for programming timeclock events.



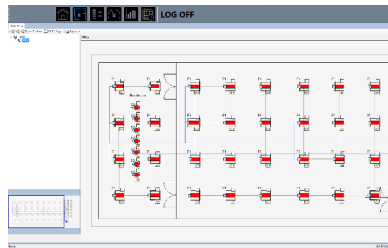
Enterprise Floorplan

The second level software package includes Floorplan control. Floorplans can be imported into the software after commissioning stage to display a visual overview of the lighting network fitting by fitting. Lights can be controlled via this view and the network can be monitored for potential lamp failures and network faults.

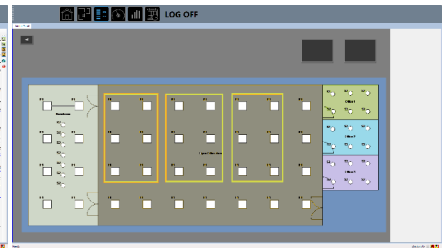
Enterprise Floorplan also includes the PC Operate and PC Event Scheduler functions from the first level package.



Floorplan view showing individual fittings.



Floorplan view showing areas.



Enterprise Suite Complete

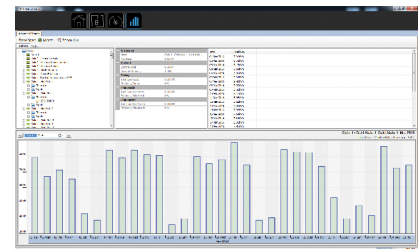
The complete Enterprise Suite adds energy consumption dials and advanced graphs to provide a comprehensive insight into the live operation of the lighting system. Graphical displays show calculated energy use in all areas while advanced graphs and reports show power usage and trending over time for analysis to help optimise energy usage. Enterprise suite is always delivered as a complete package loaded onto a suitably sized Windows Server.



Energy Dials displaying real-time energy consumption by area.



Advanced graphs showing power consumption by day / month.



Available Packages

Package	Order Code	Description
Enterprise Operate	0010-000020-00	Graphical software application for iLight control systems. Designed to run on a PC or touch PC screen (PC not supplied). Package includes single software licence of PC Operate and PC event scheduler for programming timeclock events.
Enterprise Operate with PC	0010-000023-00	Delivered loaded onto a PC, this package includes single software licence of PC Operate and Event scheduler. Package includes a suitable PC, monitor, mouse and keyboard.
Enterprise Floorplan	0010-000019-00	Package includes single user license of PC Floorplan, PC Operate and Event Scheduler for programming timeclock events.
Enterprise Floorplan with PC	0010-000022-00	Package includes single user license of PC Floorplan, PC Operate and Event Scheduler for programming timeclock events. Package includes a suitable PC, monitor, mouse and keyboard.
Enterprise Suite Complete with Server	0010-000021-00	A suite of software applications for iLight lighting control systems. Designed to run on a powerful server. Package includes server, monitor, mouse, keyboard, advanced energy displays including energy dials, graphs and reports; PC Floorplan software, event scheduler for programming timeclock events and PC Operate graphical operator interface.

Contact Us

+44 (0)1923 495495

enquiries@iLight.co.uk

www.iLight.co.uk

Cooper Lighting Solutions
20 Greenhill Crescent,
Watford Business Park,
Watford, Herts, WD18 8JA. UK

Changes to the products, to the information contained in this document, and to prices are reserved; so are errors and omissions.

iLight is a registered trademark.

All other trademarks are property of their respective owners.