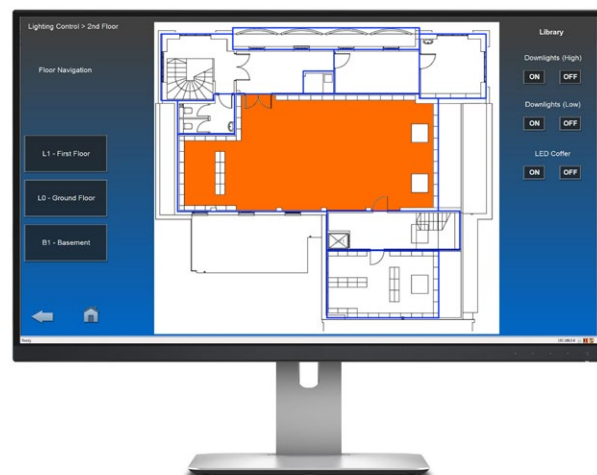


# Enterprise Operate

Configurable graphical application with full control, scheduling and system insight

## Key Features

- Fully customisable page layouts and images with intuitive navigation
- Simplify complex actions with one touch control
- Built in scheduler with astronomical time clock allows for timed events to suit your building needs
- Connects to iLight network via EG2, EG2S, TSI-1, SW2 or SW3 local connection
- Supports any size PC Monitor or PC Touch Screen Monitor (1920 x 1024 pixel minimum resolution)
- Enterprise Operate compatible with PlanView
- Minimum PC hardware specification: i5 quad core PC, Industrial Spec preferred for 24/7 operation, with 16GB ram, 500GB HDD, Windows 11Pro. PC must include 100/1000 Ethernet Port and is recommended with 22" monitor with 1920 x 1080 pixel resolution



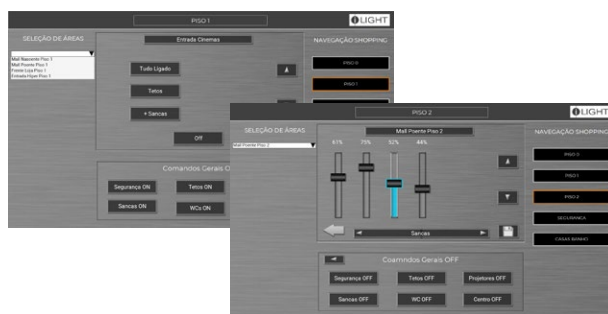
## Overview

Enterprise Operate is a software package for the control and operation of iLight lighting control systems.

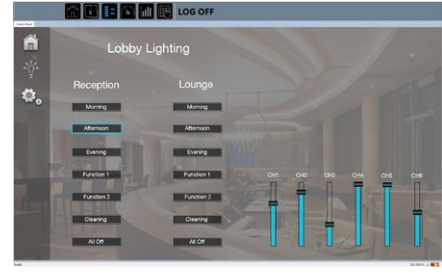
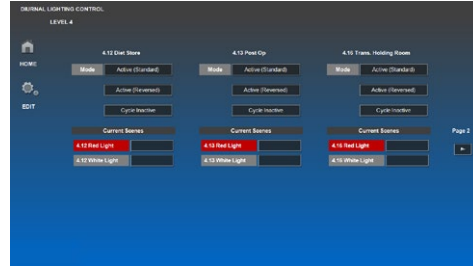
Enterprise Operate is designed to give powerful user control through a simple intuitive customised graphical interface. Actions may be manually controlled or scheduled for specific day/dates and times using the powerful astronomical timeclock scheduler.

Operated using any PC monitor, touchscreen or PC integrated tablet, Enterprise Operate is an ideal way to simplify the operation of lighting in any installation.

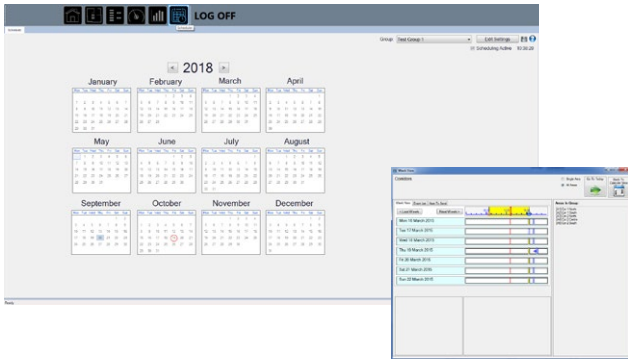
Enterprise Operate is fully compatible with iLight PlanView if floor plans are required for your project.



## Operate



## Event Scheduler



## Compatible with iLight PlanView

PlanView provides instantaneous access to the operation and health of an iLight lighting control system.

Building managers, operators and end users can control one or more sites, monitoring multiple buildings, floors and individual areas as well as the hardware components of the system at varying levels of granularity.

Users are empowered to make changes simply and efficiently, proactively managing the built environment for the benefit of the occupants.



## Available Packages

Package	Order Code	Description
Enterprise Operate	91260000231	Graphical software application for iLight control systems. Designed to run on a PC or touch PC screen (PC not supplied). Package includes single software licence of Enterprise Operate and Event Scheduler for programming timeclock events.
PlanView	91260000695	Graphical Floor Plan software application for iLight control systems. Designed to run on a PC (PC not supplied). Package includes single software licence of PlanView.

## Contact Us

enquiries@iLight.co.uk

www.iLight.co.uk

### iLight

A brand of Signify  
Usk House, Llantarnam Park  
Cwmbran, NP44 3HD, UK

Changes to the products, to the information contained in this document, and to prices are reserved; so are errors and omissions.

© 2025 Signify Holding  
All Rights Reserved

iLight is a registered trademark.  
All other trademarks are property of their respective owners.

Enterprise Operate Rev1 0125



FM 727924