

Mechanical Data

Weight: 10.8 kg
Material: Sheet steel
Surface Treatment: RAL9016 powdercoat
Door: Lockable steel hinged door

Mains Cable Access

6 x 25.5mm/M25 knockout &
 1 x 38.3mm/PGx knockout

Control Cable Access

1 x 25.5mm/M25 knockout

Terminal Sizes

Neutral: 2 x 25mm² & 13 x 16mm²
 Earth: 2 x 25mm² & 13 x 16mm²

Climate Range

Temperature: +2°C to +50°C
Humidity: +5 to 95% non condensing

Ratings

Ingress Protection: IP20
Impact Resistance: IK07
In accordance with: IEC 62208:2011

Control Data

Control:
 Via iLight network connection or DALI
Recommended Network Cable:
 iCANnet™ Network Cable
Programming: Via Device Editor software

Electrical Data

Supply: 120 - 277V AC +/-10%, 50/60 Hz
Maximum Load: 100 Amp Single Phase @ 50°C
Maximum Channel Current: 10 Amp
Protection: 10 Amp MCBs Type C, 6KA rated

Terminal Sizes:

Incoming supply, max' cable size: 10mm²
 Neutral: 2 x 25mm² & 13 x 16mm²
 Earth: 2 x 25mm² & 13 x 16mm²
 Loads, max' cable size: 1 x 4mm² or 2 x 2.5mm² per circuit
 iCANnet™ network cable size: 5 x 1mm²
 Audio Visual Port: RS485 2 x 1mm²
 Panic/fire alarm input: 2 x 1mm²

Installation: Installation must be carried out by a suitably qualified electrician.

Load Data

This unit is designed to work with most lighting load types. Please consult with the iLight help desk for guidance on true load calculations. Care should be taken when specifying discharge lighting sources with power factor capacitors.

Switched Outputs:

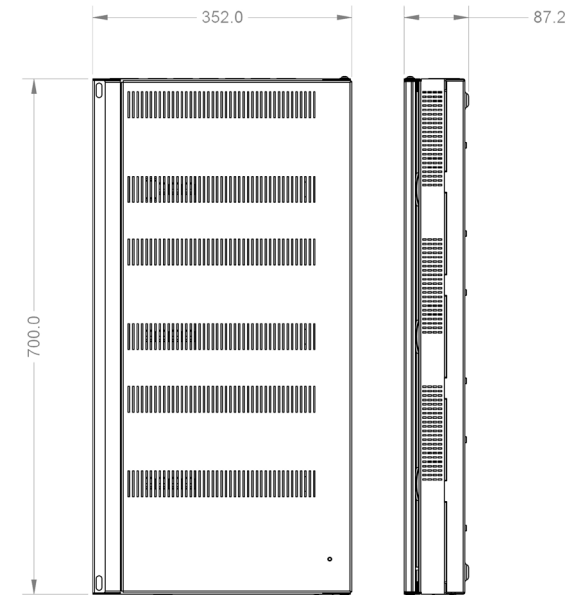
12 x 230V 10A (Inductive and Resistive)

EN3-SCMR1210

12 Channel x 10 Amp Switching Control Enclosure



Dimensions



Overview

This 12 channel high powered intelligent switching unit provides outstanding features and performance at a truly competitive price. It is fully rated for 10 Amps per channel of continuous inductive lighting load. This unit is designed for switching large lighting loads of most types. With a 128 scene integral memory this device offers multiple control options to meet the most demanding specifications.

With iLight's iCAN network connectivity, it has the capability of being linked with a virtually limitless number of other iLight products to build up to any size of system. This product is designed for projects where there are multiple channels of Architectural lighting. It is the perfect choice for shopping malls, atria exterior lighting and industrial areas.

The knockouts to the top of the enclosure have been designed to line up with any of the original iLight source controllers making replacement quick and easy in a retrofit environment.

A dedicated knockout is provided for iCANnet connection to the EN3-SCMR1210 and several accessories are available to aid the installer in connection of the iCANnet network.

iLight

Usk House, Lakeside, Llantarnam Park,
 Cwmbran, NP44 3HD, UK

t: +44 (0)1923 495495
 e: enquiries@iLight.co.uk
 www.iLight.co.uk

E&OE. iLight reserve the right to make changes to the equipment without prior notice.
 © iLight

Doc No: 9850-000886-00

EU Authorised Representative

Cooper Lighting Netherlands B.V.
 High Tech Campus
 HTC 48
 Eindhoven
 5656 AE



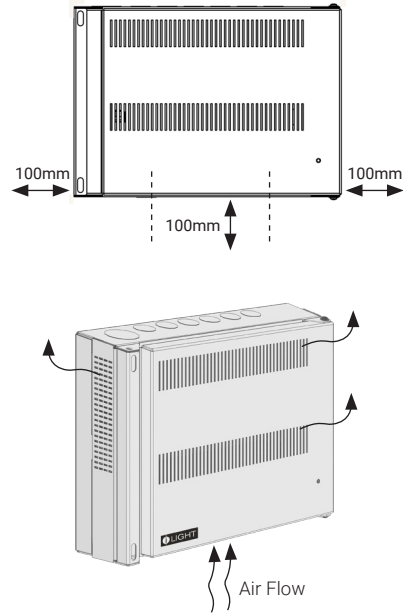
Location

Control cabinets must be located in a dry, well ventilated location where the ambient temperature is within the range of +2°C to 50°C (humidity of +5 to +95% non-condensing).

The EN Series are designed to be mounted vertically on a suitable surface, capable of supporting the weight of the populated assembly. It is important to orientate the unit correctly to allow for effective airflow for ventilation.

It is recommended to leave 100mm distance between the control cabinet and walls or other equipment underneath and either side of the unit.

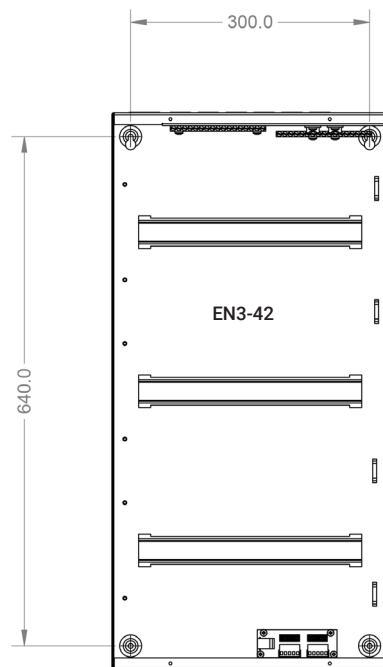
The EN series accommodate most common forms of cable management. Care should be taken not to obscure any ventilation grill on the enclosure.



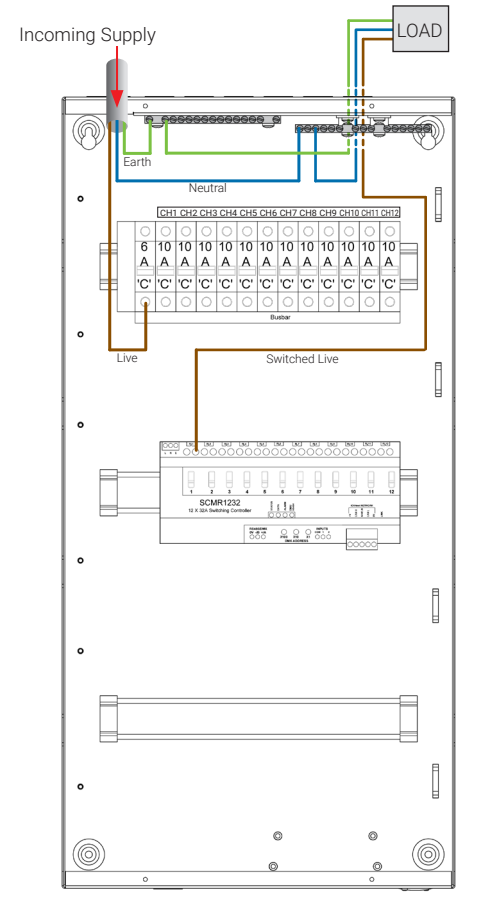
Mounting

Before mounting the cabinet to the wall, the cover will need to be removed. There are 4 screws behind the hinged door which, when unscrewed, allow the cover assembly to be removed.

In the rear section of each cabinet, there are 4 fixings holes, each accommodating up to 6mm diameter fixings. The top holes are 'key slot' design enabling the cabinets to first be hung and then secured onto place using the 2 lower fixings.

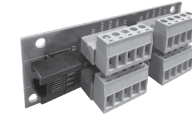


Supply and Control Wiring



Accessories

ENACC-LND-INT
iCANnet Landing Card



ENACC-PRG-INT
iCANnet Programming Port and RJ12 lead



The optional landing card provides connection of the iCANnet Network to the internal panel network. M4 Threaded posts are provided as standard to support the installation of this optional card.

The card can then be connected to the optional RJ12 programming port via an RJ12 lead to provide external connection to the network for programming and maintenance.

