

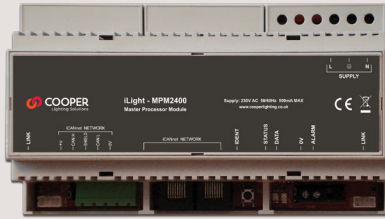
## Cooper Lighting Solutions

Usk House, Lakeside  
Llantarnam Park,  
Cwmbran,  
NP44 3HD, UK

t: +44 (0)1923 495495  
e: info@cooperlighting.co.uk  
www.cooperlighting.co.uk

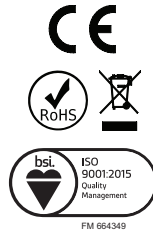
## MPM2400

Master Processor Module

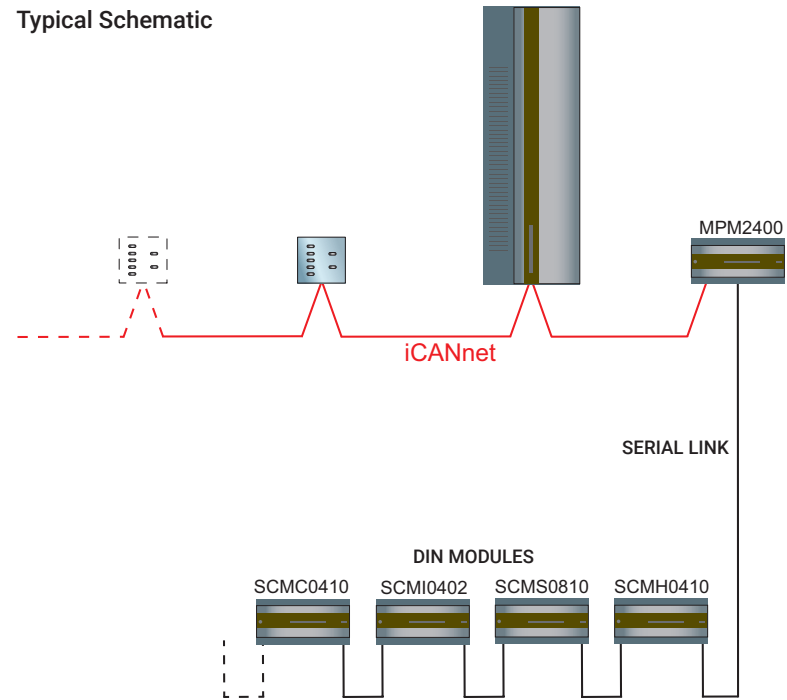


E&OE. iLight reserve the right to make changes to the equipment without prior notice.  
© Cooper Lighting Solutions

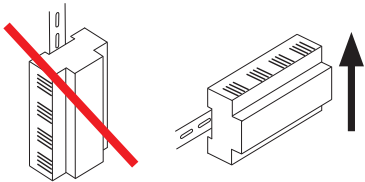
Doc No: 9850-000802-00



## Typical Schematic



## Mounting & Installation

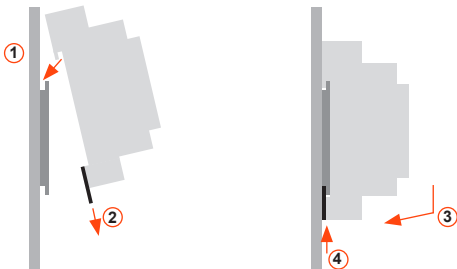


MPM2400 must be mounted in a suitable enclosure to provide regulatory protection from electric shock hazard as well as protecting the iCANnet data network from tampering that could lead to reduced network security.

Ensure selected enclosure provides adequate cooling ventilation.

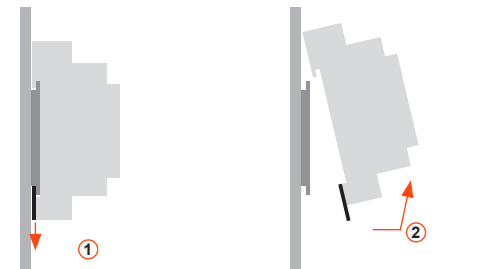
### Fixing to DIN rail

1. Fix top clips over DIN rail.
2. Pull down bottom clip using screwdriver.
3. Close module towards DIN rail.
4. Push up bottom clip to fix securely to DIN rail.



### Removing from DIN rail

1. Pull down bottom clip with screwdriver.
2. Lift module away from DIN rail.



## Technical Data

### Electrical & Mechanical

Supply: 1A, 230VAC +/- 10%, 50/60 Hz. Max cable: 2.5mm<sup>2</sup>  
Rating: Max 6A single phase @ 40°C  
Protection: Provided by installer  
Design verification as per IEC/EN 61439:  
Equipment heat dissipation, current-dependent: 8.5W Max

### Communications

Cable specification: CAT5 FTP terminated with RJ45 connectors or at the screw terminals on unit.  
Serial Link Connections: Use cable supplied with unit. See diagram for installation  
Alarm input: Max cable: 1.5mm<sup>2</sup>, Max Length: 10m

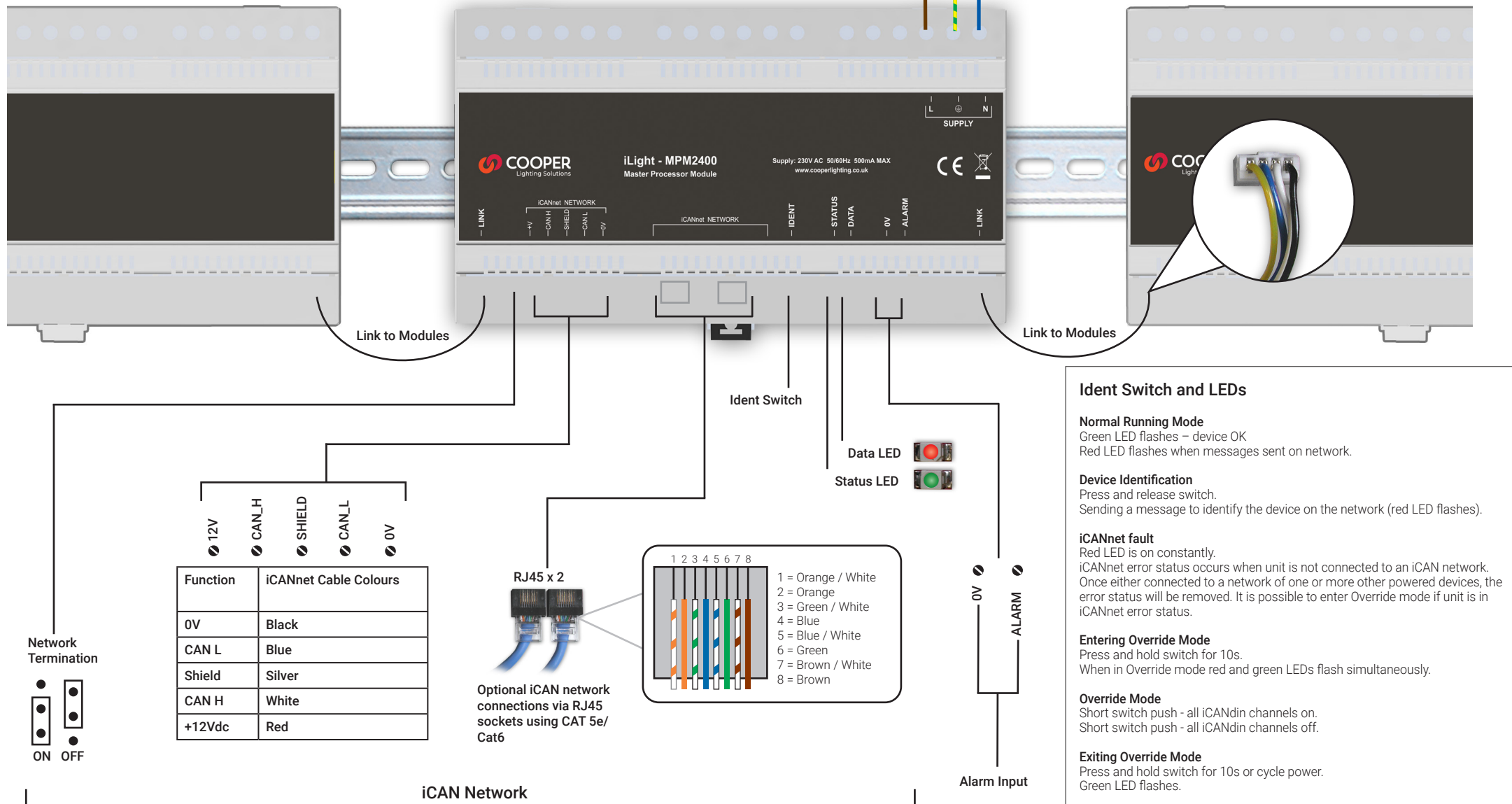
### Safety

Ambient temperature: +2C° to +40C°  
Relative humidity: 5% to 80% max, non-condensing  
IP rating: IP20  
Installation: Installation must be carried out by a suitably qualified electrician

# MPM2400

Master Processor Module

## Typical Connection Diagram



### Ident Switch and LEDs

**Normal Running Mode**  
 Green LED flashes – device OK  
 Red LED flashes when messages sent on network.

**Device Identification**  
 Press and release switch.  
 Sending a message to identify the device on the network (red LED flashes).

**iCANnet fault**  
 Red LED is on constantly.  
 iCANnet error status occurs when unit is not connected to an iCAN network. Once either connected to a network of one or more other powered devices, the error status will be removed. It is possible to enter Override mode if unit is in iCANnet error status.

**Entering Override Mode**  
 Press and hold switch for 10s.  
 When in Override mode red and green LEDs flash simultaneously.

**Override Mode**  
 Short switch push - all iCANdin channels on.  
 Short switch push - all iCANdin channels off.

**Exiting Override Mode**  
 Press and hold switch for 10s or cycle power.  
 Green LED flashes.