

Project News



Christie's, London

Lighting Design - Charles Marsden-Smedley

2008 saw the refurbishment of the main gallery spaces at Christie's Head Office in King Street, London. The brief was to draw more attention to the exhibits with the lighting scheme to be more flexible, discreet and robust. Track lighting systems have been cleverly recessed in specially made troughs within the ceiling coves with adjustable fittings for directing at either free standing pieces or wall hung works of art.

Charles Marsden-Smedley knows Christie's well, having been their design consultant 1995-2003. His knowledge of how the Christie's use their salerooms meant that Christie's ended up with a lighting and control system

that was practical, flexible, and most of all, showed off the works of art on display in the best possible light.

An iLight lighting control system was chosen for its flexibility and adaptability within the space. Installation of the system was undertaken in conjunction with extensive refurbishment works that included the Great Room, East and West Rooms, the Ante Room, Viewing Room and corridors. iLight adaptive dimmers were chosen to seamlessly control both leading and trailing edge loads. The commissioning of the iLight colour touchscreens installed was for more than just scene recall as they include pages with

comprehensive edit functions complete with individual and group sliders to enable ultimate flexibility of control as the art specimen 'stock' changes on a regular basis. The graphic pages also included site maps for master control of areas and corridor link control.



Equipment List

- 8 x Adaptive 12 Channel Source Controllers
- 1 x HF 12 Channel Source Controllers
- 4 x Mini Colour Touchscreen
- 13 x Control Plates



Images Courtesy of: Charles Marsden-Smedley



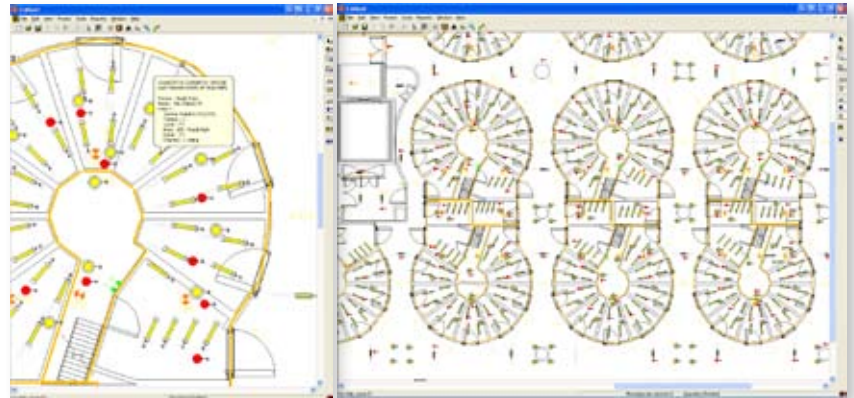
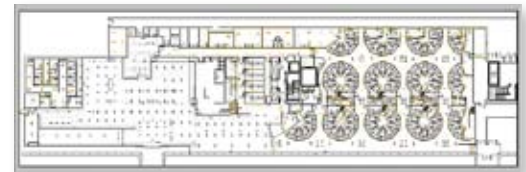
Product News

iCANview - Floor Plan

iCANview Floor plan stand alone software is used for monitoring a lighting installation using a floor plan layout based on original customer supplied drawings. Each floor plan is custom created for each site using the iCANsoft program database and a zoomable WMF file and may include multiple floor levels and layouts including position, type and connections for each iCAN network device. Ideal for use by monitoring and maintenance staff in control rooms for iCAN lighting network installations.

Selectable views include, show: device, fixtures, device connections, sensor connections and fixture connections.

Zoom function enables specific areas to be monitored in detail. Lighting control system information readouts vary by device type and capability but do not exceed, where appropriate, fixture type, device, name, output, level, area scene and channel numbers. (based upon Full DALI feedback).



iCANview - Scene Control

Ideal for use in reception areas, supervisor offices and control rooms where general staff may be required to operate pre programmed lighting scenes within selected areas on an iLight iCAN lighting network.

Uses a graphical layout – presentation is based on simple user supplied icons or pictures of the installation (jpg or bitmap) for easy navigation of layers. Used for recall and running of pre programmed lighting scenes by area. Each solution is custom created using the iCANsoft program database for each site specific application and may include multiple layers and pictures overlaid with scene selection buttons.

Datasheets available at: <http://www.ilight.co.uk/products-accessories.htm>

Product News

New BN-2 Bridging Module - NOW SHIPPING

The new replacement BN-2 bridging module has now been released. Using single or multiple BN-2 modules allows 2 or more iCAN network segments to be connected together or arranged logically into floors or areas for ease of management. The bridge is also used to extend the network as a repeater where more than 1000m of cabling is required or more than 100 network devices are used on one segment. BN-2 also allows network messages to be filtered to ensure optimal performance in larger networks.

BN-2 enables multiple segments with up to a total of 65,000 devices may be connected on one system. The bridge also ensures reliability of large systems by isolating and containing any network cabling faults.

Features now include:

- CE and UL approval
- Compact design- Much smaller than original unit
- CAN flash update over network
- Remote PSU or network supply
- Repeat, filter and bridge capability built in
- 16 x 128 step sequences
- Green CAN connector
- Lower price than original unit



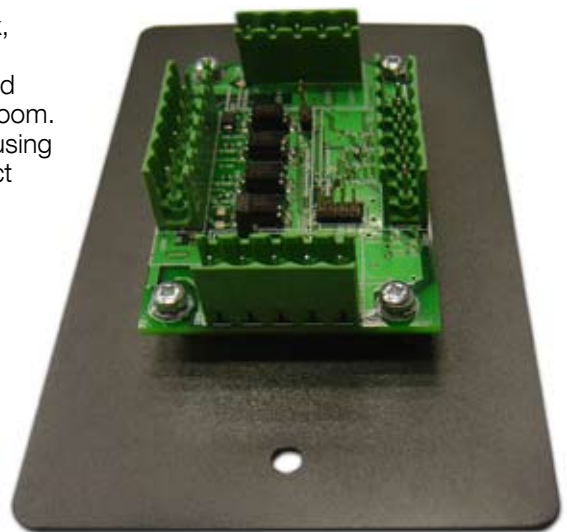
New UIG-2 Interface - NOW SHIPPING

This unit provides a highly cost effective interface between an iCANnet™ system and other control systems. Fitting in a UK doublegang wallbox and powered through the iCAN™ network cable, this compact versatile unit can be mounted virtually anywhere. It has four switch inputs and four analogue inputs, all fully programmable as to their function. In addition to the inputs there are four LED output drives for visual feedback of switch activity. There are also the essential connections to the iCAN™ network.

The unit allows other items to provide inputs to the iCANnet™ network, for example partition switches or fader controls. Configured for a room join function, just moving the partition will open or close the contact and automatically re-program the function of the control panels within the room. Alternatively a fader can be provided to set the overall level in an area using the units analogue inputs. The adaptability and versatility of this product make it an essential item in more sophisticated venues.

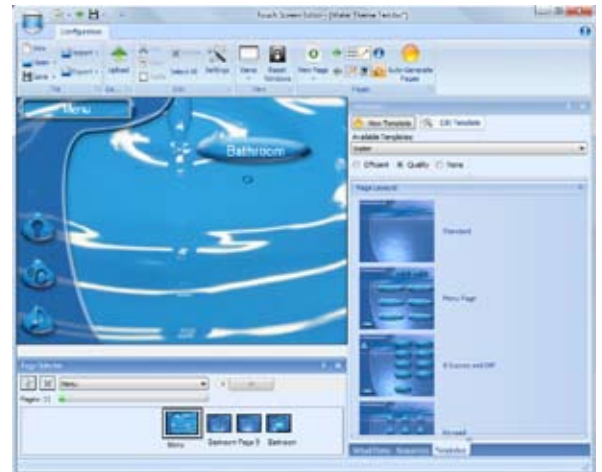
Features include:

- CE and UL approval
- Longer device names- 32 character
- 4 x Opto isolated inputs
- 4 x Analogue inputs
- 4 x LED outputs
- Green CAN connector
- CAN re-flash update over network
- 16 x 128 sequences
- Partition/join functionality



New Touchscreen Editor Tool (TSC30 & TSC50)

A completely redesigned software application has been released by iLight. Aimed at installers and configuring engineers, the new touchscreen editor is intended to simplify and speed up commissioning times and offer more powerful graphic building tools. Now supporting .png files as well as bitmap images, sharper pages can be produced faster and with more flexibility. The transparent background properties of .png files make them a basis for attractive custom pages where button graphics are floated over project specific background images. These are now much faster to produce, leaving a crisp, sharper looking final effect.

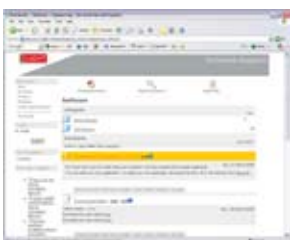
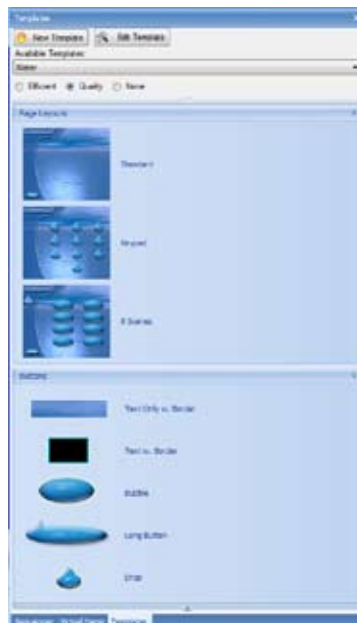


The new software aims to:

- Simplify common tasks to reduce commissioning time and cost
- Allow better looking pages to be constructed
- Provide a solid base for future windows software development & maintenance

Main features include:

- Look & Layout Config Templates
- Drag-and-Drop Interface
- Auto area pages
- Auto keypad pages
- Handles transparent images
- Docking windows



Installers: Download your new Touchscreen Editor at: <http://www.ilight.info>
You will need your user name and password to access these tools.



iLight. Cooper Controls Ltd,
Unit 4 Enterprise Centre, Penshurst,
Tonbridge, Kent, TN11 8BG. UK

T: +44 (0)1892 870072
F: +44 (0)1892 870074
E: enquiries@iLight.co.uk
www.iLight.co.uk